

## LC Sales Update

Number: LCP-2008-01

Prepared By: Keith Bratchford

Date: January 7, 2008



# PIB

### ***Product Information Bulletin INTERNAL VARIAN USE ONLY For Worldwide Distribution***

## **Introducing the 900-LC Analytical to Preparative HPLC Series**

### **Index**

[Introduction](#)

[Sales Materials](#)

- [Email Marketing Campaign](#)
- [Brochures](#)
- [Specification Sheets](#)
- [Application Notes](#)
- [HPLC Reference Guide Poster](#)
- [Vouchers](#)

[HPLC PIF DVD](#)

[Varian, Inc. Website – Revamped HPLC Site](#)

[Ordering Information](#)



### **Introduction**

Varian, Inc. is pleased to announce the introduction of its newest range of HPLC systems. The Varian 920-LC analytical HPLC and the Varian 940-LC analytical to preparative HPLC systems deliver performance, flexibility and ease of use, allowing customers to meet all their application needs today and into the future.

#### **Varian 920-LC Analytical HPLC**

The Varian 920-LC is a fully automated, computer controlled analytical HPLC (High Performance Liquid Chromatography) system that offers “Fast LC” capabilities, state of the art performance, improved productivity, high sensitivity detectors and a fully automated validation package for customers who operate in a regulated environment.

The 920-LC is an integrated system that can be configured to meet a customer’s specific needs. Each system comprises a pumping system, an autosampler and one or more detectors. The system is preconfigured, pre-plumbed and pre-tested before shipment, significantly reducing the time required to achieve maximum sample throughput. The low dead volume, pulse free performance and precise solvent proportioning valves make the Varian 920-LC suitable for “Fast LC”. When used with short, highly efficient Varian HPLC columns packed with sub 3 micron particles, chemists will be able to achieve shorter analysis times, better peak shapes and better quality data. A choice of built in programmable UV-Vis or Diode detectors feature low noise and high sensitivity to deliver lower detection limits for trace analysis. Optional fluorescence, refractive index, and evaporative light scattering detectors allow a wide variety of analyses to be performed with the 920-LC.

## Varian 940-LC Analytical to Preparative HPLC

The 940-LC is a dedicated analytical to semi-preparative (semi-prep) system. It can be used both as an analytical HPLC and for scaling-up flows to work with larger capacity preparative scale columns to isolate, purify and collect moderate quantities of components of interest in a sample.

The Varian 940-LC saves time and valuable sample material by allowing chromatographers to optimize their separations and collect purified components on the same instrument. Delivering flow rates of 0.025 ml/min up to 200 ml/min, the 940-LC is suitable for use with both 4.6 mm ID analytical columns and, following a linear scale-up, 2" semi-preparative columns. Users can maintain the separation and resolution of the smaller column while significantly increasing the mass of purified material.

Offering analytical and semi-prep capabilities in a single instrument reduces the expense, maintenance, and complexity of employing separate systems. The 940-LC automates the transition from analytical to semi-preparative flow rates without the need to change plumbing or configurations, reducing the possibility of errors and subsequent losses of potentially precious materials.

## Varian 900-LC Series Analytical Instrument Qualification

The Varian 920-LC and 940-LC HPLC systems are offered with Analytical Instrument Qualification (AIQ) as an option. Analytical Instrument Qualification (AIQ) is the documented evidence that an instrument is fit for its intended purpose. Use of a qualified instrument in analyses provides our customers with confidence in the validity of generated data.

Further information about the Varian 900-LC series AIQ offering will be provided in a separate PIB and at the upcoming training sessions.

## Obsolescence of Prostar series HPLC

With the introduction of the new 920-LC and 940-LC systems, some modules within the Prostar HPLC series will no longer be available. A full explanation of retained and obsoleted Prostar modules will be announced in a separate PIB

## Sales Materials

### Email Marketing Campaign

The following email teaser was sent out to customer before X-mas:

**VARIAN** What's heading your way in 2008?

- They will be industry-leading
- They will be integrated
- They will be information-rich

**You will be impressed**  
**Look out for your email on January 7...**

Tel: 01865 291500 • Fax: 01865 841945 • email: [custcare@varianinc.com](mailto:custcare@varianinc.com)

The following email will be sent to customers today:

**VARIAN** The secret is out...two new HPLC systems from Varian, Inc.

**...the 920-LC and 940-LC, delivering performance, reliability and flexibility, just like we said they would.**

- They are industry-leading
- They are integrated
- They are information-rich

Whatever your needs, the 920-LC for analytical HPLC gives you a wealth of options for enhanced productivity and maximum uptime. The compact 940-LC for analytical to preparative HPLC provides easy scalability, versatile detection and an unmatched concentration range.

To see the benefits of the new 920-LC and 940-LC book your place on one of our local free seminar sessions. **BOOK NOW**

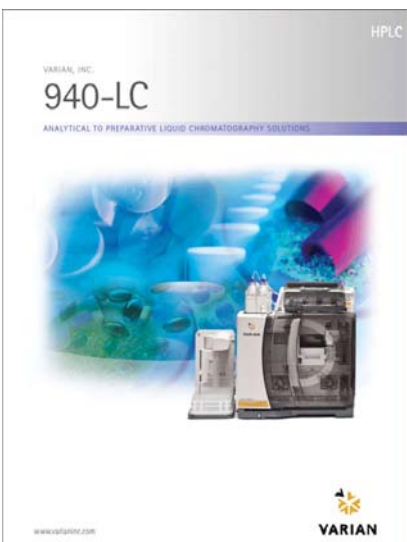
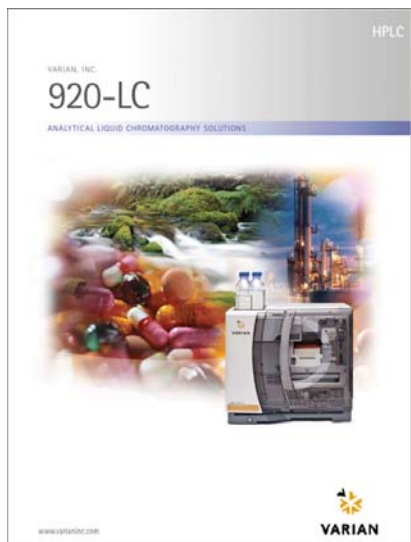
Tel: 01865 291500 • Fax: 01865 841945 • email: [uksales@varianinc.com](mailto:uksales@varianinc.com)

## Brochures

Two brochures have been developed for the 920-LC and 940-LC systems. These will be available during training, but can also be ordered directly from our Comac site:

<http://varian.litorders.com/>

SI-0889	Varian 920-LC Analytical HPLC Brochure (12/07)
SI-0890	Varian 940-LC Analytical to Prep HPLC Brochure (12/07)



**Please Note**, that there may be a short delay in shipping brochures, due to the X-mas break. Please place your orders and they will ship to you as soon as possible.

## Specification Sheets

Two specification sheets have been developed for the 920-LC and 940-LC systems. These will be provided to you electronically at training, on the PIF DVD.

SPECIFICATION SHEET	
<b>Varian 920-LC</b> ANALYTICAL LIQUID CHROMATOGRAPHY	
<p><b>Design overview</b> The Varian 920-LC analytical high performance liquid chromatograph is an integrated, pre-configured, pre-validated system that can be controlled by Varian Database™ Chromatographic Software on a single computer, or through a fully automated stand and acquisition system. The low pressure automatic gradient incorporating dual piston pump with both an Enginer™, or typically using pressure controlled, variable solvent flow throughout the HPLC system. The autogradient solvent injection method increases conversion of test than 500% and has optional sample cooling. A solvent heater leads up to five columns from 4.6 to 12 mm ID and 10 to 300 mm length. A UV-VIS or photodiode array (PDA) detector is provided as standard – both provide high resolution and low noise fluorescence, reflectance near IR and near-infrared light scattering (NLS) detectors with a cooling option can also be added for the analysis of non-UV-VIS absorbing compounds.</p> <p>These specifications represent typical performance.</p>	
<b>Low pressure gradient solvent delivery system</b>	<p>Type: Recirculating dual piston design</p> <p>Maximum pressure: 10 MPa (1500 psi), 100 bar from 1000 to 10,000 psi</p> <p>Flow rate range: 0.01 to 1000 mL/min</p> <p>Number of solvents: Maximum of 4</p> <p>Capacity: 4 solvent reservoirs built-in</p> <p>Flow rate range: 0.01 to 1000 mL/min</p> <p>Wetted surfaces: 316 stainless steel, ceramic, PEEK, borosilicate glass</p> <p>Compositional accuracy: ±1%</p> <p>Dispensibility precision: ±0.1% RSD at 1 mL/min</p> <p>Dispensibility range: 0.1 to 1000 mL/min</p>
<b>Preparation solvent delivery system</b>	<p>Type: Recirculating dual piston design</p> <p>Maximum pressure: 10 MPa (1500 psi), 100 bar from 1000 to 10,000 psi</p> <p>Flow rate range: 0.01 to 1000 mL/min</p> <p>Number of solvents: Maximum of 4</p> <p>Capacity: 4 solvent reservoirs built-in</p> <p>Flow rate range: 0.01 to 1000 mL/min</p> <p>Wetted surfaces: 316 stainless steel, ceramic, PEEK, borosilicate glass</p> <p>Compositional accuracy: ±1%</p> <p>Dispensibility precision: ±0.1% RSD at 1 mL/min</p> <p>Dispensibility range: 0.1 to 1000 mL/min</p>
<b>Autogradient</b>	<p>Minimum number of samples: 200 to 2000 (1000) vials</p> <p>Autogradient range: 0.01 to 1000 mL/min</p> <p>Injection volume range: 0.1 to 100 µL</p> <p>Injection repeatability: ±0.1% RSD using a 10 µL injection</p> <p>Capacity: 1000 vials</p> <p>Wetted surfaces: 316 stainless steel, PEEK, borosilicate glass, propylene or DMSO</p>

SPECIFICATION SHEET	
<b>Varian 940-LC</b> ANALYTICAL TO PREPARATIVE LIQUID CHROMATOGRAPHY	
<p><b>Design overview</b> The Varian 940-LC analytical to preparative high performance liquid chromatograph is an integrated, pre-configured, pre-validated system that can be controlled by Varian Database™ Chromatographic Software on a single computer, or through a fully automated stand and acquisition system. The high pressure, recirculating single piston pump with pressure modulator maintains consistent solvent volume flow throughout the HPLC system. The autogradient solvent injection method increases conversion of test than 500%. The Varian 940-LC Scale-Up Module provides substantially reduced solvent, allowing change-over from analytical to preparative operations. When using the preparative HPLC system, a third pump with a 20 mL pump head is used for sample injection. The UV or diode array detector is provided as standard – both provide high resolution and low noise. A fraction collector provides automatic sample collection.</p> <p>These specifications represent typical performance.</p>	
<b>High pressure gradient solvent delivery system</b>	<p>Type: Recirculating single piston, pressure modulator design</p> <p>Maximum pressure: 10 MPa (1500 psi), 100 bar from 1000 to 10,000 psi</p> <p>Flow rate range: 0.01 to 1000 mL/min</p> <p>Number of solvents: Maximum of 4</p> <p>Flow rate range: 0.01 to 1000 mL/min</p> <p>Wetted surfaces: 316 stainless steel, ceramic, PEEK, borosilicate glass</p> <p>Compositional accuracy: ±1%</p> <p>Dispensibility precision: ±0.1% RSD at 1 mL/min</p> <p>Dispensibility range: 0.1 to 1000 mL/min</p>
<b>Autogradient</b>	<p>Minimum number of samples: 100 to 1000 (500) vials</p> <p>Autogradient range: 0.01 to 1000 mL/min</p> <p>Injection volume range: 0.1 to 100 µL</p> <p>Injection repeatability: ±0.1% RSD using a 10 µL injection</p> <p>Capacity: 1000 vials</p> <p>Wetted surfaces: 316 stainless steel, PEEK, borosilicate glass, propylene or DMSO</p>

## New 900-LC series Application Notes

The following Application Notes are available on our website and will also be provided during training on your PIF DVD:

Note	Author	Title/Description
SI-1132	D. Hoobin	<a href="#">Simple Scale-up on a 940-LC Analytical to Preparative HPLC</a>
SI-1128	P. Truong	<a href="#">Rapid Analysis of B1 B2 B3 B6 in Vitamin Tablets with the Varian 920-LC and Pursuit™ XR C18 Column</a>
SI-1028	P. Truong	<a href="#">Efficient HPLC Analysis in the USP Assay of Ibuprofen and in the Limit Test of Ibuprofen-related Compound C in Ibuprofen Tablets with the Varian 920-LC and Pursuit™ C18 Column</a>
SI-1023	P. Truong	<a href="#">Productivity Enhancement of USP Assay for Ibuprofen Oral Suspension with the Varian 920-LC and Pursuit™ XR C8 Column</a>
SI-0976	D. Hoobin	<a href="#">Using Linear Scale-up Principles and the Varian 940-LC with Scale-Up Module for the Isolation of 5-Hydroxytryptophan from Griffonia Simplicifolia</a>
SI-0958	P. Truong G. Russell	<a href="#">Improved Analysis of Polycyclic Aromatic Hydrocarbons with the Varian 920-LC and Pursuit™ PAH Column</a>

## HPLC Reference Guide Poster

The following HPLC Reference Guide Poster will ship with every HPLC system. The poster provides useful laboratory information and also showcases Varian's complete HPLC offering, from Analytical to Process Scale separations.

**Varian HPLC Reference Guide**  
ANALYTICAL TO PROCESS SCALE SEPARATION SOLUTIONS FROM VARIAN, INC.

**Common Issues with HPLC Chromatograms**

Problem	Common Causes	Solutions
<b>Baseline</b>	<ul style="list-style-type: none"> <li>Leaky injector</li> <li>Leaky detector</li> <li>Leaky column</li> <li>Leaky solvent</li> <li>Leaky waste</li> <li>Leaky vent</li> <li>Leaky seal</li> <li>Leaky O-ring</li> <li>Leaky gasket</li> <li>Leaky nut</li> <li>Leaky screw</li> <li>Leaky plug</li> <li>Leaky cap</li> <li>Leaky cover</li> <li>Leaky door</li> <li>Leaky panel</li> <li>Leaky frame</li> <li>Leaky base</li> <li>Leaky top</li> <li>Leaky side</li> <li>Leaky back</li> <li>Leaky front</li> <li>Leaky bottom</li> <li>Leaky middle</li> <li>Leaky top-middle</li> <li>Leaky top-back</li> <li>Leaky top-front</li> <li>Leaky top-bottom</li> <li>Leaky top-middle-back</li> <li>Leaky top-middle-front</li> <li>Leaky top-middle-bottom</li> <li>Leaky top-middle-back-front</li> <li>Leaky top-middle-back-bottom</li> <li>Leaky top-middle-front-bottom</li> <li>Leaky top-middle-back-front-bottom</li> </ul>	<ul style="list-style-type: none"> <li>Check for leaks</li> <li>Check for tight seals</li> <li>Check for tight O-rings</li> <li>Check for tight gaskets</li> <li>Check for tight nuts</li> <li>Check for tight screws</li> <li>Check for tight plugs</li> <li>Check for tight caps</li> <li>Check for tight covers</li> <li>Check for tight doors</li> <li>Check for tight panels</li> <li>Check for tight frames</li> <li>Check for tight bases</li> <li>Check for tight tops</li> <li>Check for tight sides</li> <li>Check for tight backs</li> <li>Check for tight fronts</li> <li>Check for tight bottoms</li> <li>Check for tight middles</li> <li>Check for tight top-middle</li> <li>Check for tight top-back</li> <li>Check for tight top-front</li> <li>Check for tight top-bottom</li> <li>Check for tight top-middle-back</li> <li>Check for tight top-middle-front</li> <li>Check for tight top-middle-bottom</li> <li>Check for tight top-middle-back-front</li> <li>Check for tight top-middle-back-bottom</li> <li>Check for tight top-middle-front-bottom</li> <li>Check for tight top-middle-back-front-bottom</li> </ul>
<b>Peak shape</b>	<ul style="list-style-type: none"> <li>Leaky injector</li> <li>Leaky detector</li> <li>Leaky column</li> <li>Leaky solvent</li> <li>Leaky waste</li> <li>Leaky vent</li> <li>Leaky seal</li> <li>Leaky O-ring</li> <li>Leaky gasket</li> <li>Leaky nut</li> <li>Leaky screw</li> <li>Leaky plug</li> <li>Leaky cap</li> <li>Leaky cover</li> <li>Leaky door</li> <li>Leaky panel</li> <li>Leaky frame</li> <li>Leaky base</li> <li>Leaky top</li> <li>Leaky side</li> <li>Leaky back</li> <li>Leaky front</li> <li>Leaky bottom</li> <li>Leaky middle</li> <li>Leaky top-middle</li> <li>Leaky top-back</li> <li>Leaky top-front</li> <li>Leaky top-bottom</li> <li>Leaky top-middle-back</li> <li>Leaky top-middle-front</li> <li>Leaky top-middle-bottom</li> <li>Leaky top-middle-back-front</li> <li>Leaky top-middle-back-bottom</li> <li>Leaky top-middle-front-bottom</li> <li>Leaky top-middle-back-front-bottom</li> </ul>	<ul style="list-style-type: none"> <li>Check for leaks</li> <li>Check for tight seals</li> <li>Check for tight O-rings</li> <li>Check for tight gaskets</li> <li>Check for tight nuts</li> <li>Check for tight screws</li> <li>Check for tight plugs</li> <li>Check for tight caps</li> <li>Check for tight covers</li> <li>Check for tight doors</li> <li>Check for tight panels</li> <li>Check for tight frames</li> <li>Check for tight bases</li> <li>Check for tight tops</li> <li>Check for tight sides</li> <li>Check for tight backs</li> <li>Check for tight fronts</li> <li>Check for tight bottoms</li> <li>Check for tight middles</li> <li>Check for tight top-middle</li> <li>Check for tight top-back</li> <li>Check for tight top-front</li> <li>Check for tight top-bottom</li> <li>Check for tight top-middle-back</li> <li>Check for tight top-middle-front</li> <li>Check for tight top-middle-bottom</li> <li>Check for tight top-middle-back-front</li> <li>Check for tight top-middle-back-bottom</li> <li>Check for tight top-middle-front-bottom</li> <li>Check for tight top-middle-back-front-bottom</li> </ul>
<b>Resolution</b>	<ul style="list-style-type: none"> <li>Leaky injector</li> <li>Leaky detector</li> <li>Leaky column</li> <li>Leaky solvent</li> <li>Leaky waste</li> <li>Leaky vent</li> <li>Leaky seal</li> <li>Leaky O-ring</li> <li>Leaky gasket</li> <li>Leaky nut</li> <li>Leaky screw</li> <li>Leaky plug</li> <li>Leaky cap</li> <li>Leaky cover</li> <li>Leaky door</li> <li>Leaky panel</li> <li>Leaky frame</li> <li>Leaky base</li> <li>Leaky top</li> <li>Leaky side</li> <li>Leaky back</li> <li>Leaky front</li> <li>Leaky bottom</li> <li>Leaky middle</li> <li>Leaky top-middle</li> <li>Leaky top-back</li> <li>Leaky top-front</li> <li>Leaky top-bottom</li> <li>Leaky top-middle-back</li> <li>Leaky top-middle-front</li> <li>Leaky top-middle-bottom</li> <li>Leaky top-middle-back-front</li> <li>Leaky top-middle-back-bottom</li> <li>Leaky top-middle-front-bottom</li> <li>Leaky top-middle-back-front-bottom</li> </ul>	<ul style="list-style-type: none"> <li>Check for leaks</li> <li>Check for tight seals</li> <li>Check for tight O-rings</li> <li>Check for tight gaskets</li> <li>Check for tight nuts</li> <li>Check for tight screws</li> <li>Check for tight plugs</li> <li>Check for tight caps</li> <li>Check for tight covers</li> <li>Check for tight doors</li> <li>Check for tight panels</li> <li>Check for tight frames</li> <li>Check for tight bases</li> <li>Check for tight tops</li> <li>Check for tight sides</li> <li>Check for tight backs</li> <li>Check for tight fronts</li> <li>Check for tight bottoms</li> <li>Check for tight middles</li> <li>Check for tight top-middle</li> <li>Check for tight top-back</li> <li>Check for tight top-front</li> <li>Check for tight top-bottom</li> <li>Check for tight top-middle-back</li> <li>Check for tight top-middle-front</li> <li>Check for tight top-middle-bottom</li> <li>Check for tight top-middle-back-front</li> <li>Check for tight top-middle-back-bottom</li> <li>Check for tight top-middle-front-bottom</li> <li>Check for tight top-middle-back-front-bottom</li> </ul>

**Flow Rates/Scale-Up Factor**

**UV Cut-off of Common HPLC Solvents**

**HPLC Systems - Miscibility Information**

**Optimizing Gradient**

**Note:** This poster will be provided to you in electronic format on your PIF DVD. Once printed, we will make it available for ordering via the Comac site. A separate PIB will be sent out with ordering information in the coming weeks.

## Voucher Offers

The following HPLC column and Galaxie vouchers will be sent out to customers. These vouchers will also be provided to you during training on your PIF DVD.

**Upgrade your analysis in the Varian Column Challenge**

With the purchase of your new HPLC, now is the time to upgrade your analysis.

Challenge your Varian representative today to show you how we can help you get better results in less time with less effort! Whether you want to improve speed, resolution or sensitivity, Varian has an improved solution for you.

Our premier column lines Pursuit™ and Polaris™ – with unique chemistries including diphenyl, ethers and amides – and the expert knowledge of our people are a winning combination.

Tell us about your application and get a FREE column when you order your new 920-LC HPLC system. Simply fill this out and hand to your Varian sales representative.

**Please include the following FREE column with my new 920 HPLC system order**

Application/Method description : \_\_\_\_\_  
 Phase: Pursuit Pursuit XSt Polaris \_\_\_\_\_  
 Particle size: 2.0µ 3.0µ 5.0µ \_\_\_\_\_  
 Length: \_\_\_\_\_  
 ID: \_\_\_\_\_

VARIAN, INC.  
**Save Money: Upgrade to Galaxie™ Now!**

10% discount on upgrade!

Varian, Inc. is pleased to introduce the new 900-LC Series.

To celebrate this launch we are giving you the opportunity to upgrade your discontinued Star software to the powerful Galaxie Chromatography software.

Order your upgrade via one of the special part numbers listed overleaf to receive your 10% discount on the upgrade!

## HPLC PIF DVD

A HPLC Product Information Folder (PIF) DVD will be supplied to you at training. The PIF DVD will contain all the marketing materials described above plus much more to help you sell the new 900-LC series successfully. The DVD contains 6 PIFs, one for each of the following:

- **920-LC PIF**
- **940-LC PIF**
- **Modular HPLC PIF**
- **Consumables PIF**
- **Galaxie PIF**
- **Service & Support PIF**

Each PIF provides detailed information under the usual PIF categories: Introduction, Positioning, Technology, Specifications, Sole Source Justification, Manuals, Applications, Standard Configurations, Upgrades and Specials, Competition, Objections and FAQs, Technical Notes, Glossary, Marketing Materials and Training Presentations.

VARIAN, INC. HPLC Products

Home | Products | Services | Modules | Consumables | Galaxie | Service & Support

**Product Information Folder**

- Varian 920-LC
- Varian 940-LC
- Modules
- Consumables
- Galaxie
- Service & Support

**The Complete HPLC Solution from Varian, Inc.**

Welcome to the Varian HPLC Product Information Folder (PIF).

A HPLC solution requires more than the instrumentation. Sample preparation, columns, hardware, software, data analysis, fraction collection and global support are all elements of the total solution. Varian is one of the few credible vendors that can offer a full solution for HPLC to the pharmaceutical, environmental, and industrial customer.

With the introduction of the Varian 920-LC and 940-LC Liquid Chromatography, you can be confident that Varian offers competitive instrumentation for the conventional analytical and preparative chromatographer in the key HPLC markets.

The Varian advantage is not just one capability - it is the sum of many advantages that the customer values. This PIF explores these advantages and benefits for the customer in detail.

The information in this PIF is intended for internal use only. Browse the PIF using the navigation bar on the left and the links at the top right. Alternatively, [click here](#) to view the DVD contents.

Good luck and good selling!

Comments to: [help@varianinc.com](mailto:help@varianinc.com)  
 Last updated: 06 December 2007  
 All rights reserved. For internal use only.

## **Varian, Inc. Website – Revamped HPLC site**

The HPLC section of our Varian, Inc. website has been revamped to showcase our complete HPLC offering, from the new integrated 900-LC series, through to Purification systems, Modular HPLC, Galaxie software and Consumables.

You can check out the new site here:

<http://www.varianinc.com/products/chrom/lc/index.html>

## **Ordering Information**

The following pre-configured 900-LC series systems are available:

### **920-LC Systems**

- [920-LC isocratic analytical system with autosampler and UV detection](#)
- [920-LC gradient analytical system with autosampler, UV-Vis detection and column heater](#)
- [920-LC gradient analytical system with cooled autosampler, UV-Vis detection and column heater](#)
- [920-LC gradient analytical system with autosampler, diode array detection and column heater](#)
- [920-LC gradient analytical system with cooled autosampler, diode array detection and column heater](#)

### **940-LC Systems**

- [940-LC gradient semi-prep system with UV-Vis detection, manual injector and fraction collector](#)
- [940-LC gradient semi-prep system with autosampler, UV-Vis detection, scale-up module and fraction collector](#)
- [940-LC gradient semi-prep system with autosampler, diode array detection, scale-up module and fraction collector](#)
- [940-LC gradient prep system with pump injector and UV detection](#)

Use the information below to place your orders for each of the pre-configured systems:

## 920-LC isocratic analytical system with autosampler and UV detection

To order a complete system select:

1	An instrument	Section A
2	Galaxie data acquisition software	Section B
3	Instrument options	Section C
4	HPLC columns	Section D
5	A PC and printer	<a href="#">PC Requirements</a>
6	Spares and Consumables	As required

### Instrument: Section A

Description	Part number
920-LC isocratic analytical system with autosampler and UV detection Includes: <ul style="list-style-type: none"> <li>• <a href="#">Galaxie Control Software</a> and help system</li> <li>• Isocratic pump</li> <li>• Autosampler</li> <li>• UV dual wavelength detector</li> <li>• Analytical flow cell (9x0)</li> <li>• Tubing and connections</li> <li>• Operation manual</li> <li>• HPLC Reference Guide poster</li> </ul>	001008900X  Where: X=0 for Australia/Asia X=1 for USA X=2 for Europe

### Galaxie data acquisition software : Section B

Select one item only from this section:

Description	Part Number
Galaxie data acquisition software, single Instrument Pkg	0395000096
Galaxie data acquisition software, four instrument Pkg	0395000094

### Instrument options: Section C

Select any of the options from the following section:

Description	Part Number
Refractive index detector (internal)	9710000500
PL-ELS 2100 evaporative light scattering detector (external)	08600110 (110V) 08600240 (240V)
PL-ELS 2100 ICE evaporative light scattering detector (external)	086001110 (110V) 086001240 (240V)
Fluorescence detector (internal)	9710000300
Manual injector Analytical	9710000100
Microanalytical flowcell (4x0)	0210224200
Refractive index detector (external)	PL08800000

### HPLC columns: Section D

Use the links below to select the HPLC columns that meet your specific application needs:

- [Pursuit®](#)
- [Pursuit® XRs](#)
- [Polaris®](#)

## 920-LC gradient analytical system with autosampler, UV-Vis detection and column heater

To order a complete system select:

1	An instrument	Section A
2	Galaxie data acquisition software	Section B
3	Instrument options	Section C
4	HPLC columns	Section D
5	A PC and printer	<a href="#">PC Requirements</a>
6	Spares and Consumables	As required

### Instrument: Section A

Description	Part number
920-LC gradient analytical system with autosampler, UV-Vis detection and column heater Includes: <ul style="list-style-type: none"> <li>• <a href="#">Galaxie Control Software</a> and help system</li> <li>• Quaternary pump</li> <li>• Autosampler</li> <li>• UV-Vis dual wavelength detector</li> <li>• Analytical flow cell (9x0)</li> <li>• Column heater</li> <li>• Tubing and connections</li> <li>• Operation manual</li> <li>• HPLC Reference Guide poster</li> </ul>	001008910X  Where: X=0 for Australia/Asia X=1 for USA X=2 for Europe

### Galaxie data acquisition software : Section B

Select one item only from this section:

Description	Part Number
Galaxie data acquisition software, single Instrument Pkg	0395000096
Galaxie data acquisition software, four instrument Pkg	0395000094

### Instrument options: Section C

Select any of the options from the following section:

Description	Part Number
Refractive index detector (internal)	9710000600
PL-ELS 2100 evaporative light scattering detector (external)	08600110 (110V) 08600240 (240V)
PL-ELS 2100 ICE evaporative light scattering detector (external)	086001110 (110V) 086001240 (240V)
Fluorescence detector (internal)	9710000300
Valves for column heater	9810042300
Microanalytical flowcell (4x0)	0210224200
Refractive index detector (external)	PL08800000

### HPLC columns : Section D

Use the links below to select the HPLC columns that meet your specific application needs:

- [Pursuit®](#), [Pursuit® XRs](#), [Polaris®](#)



## 920-LC gradient analytical system with cooled autosampler, UV-Vis detection and column heater

To order a complete system select:

1	An instrument	Section A
2	Galaxie data acquisition software	Section B
3	Instrument options	Section C
4	HPLC columns	Section D
5	A PC and printer	<a href="#">PC Requirements</a>
6	Spares and Consumables	As required

### Instrument: Section A

Description	Part number
920-LC gradient analytical system with autosampler, UV-Vis detection and column heater Includes: <ul style="list-style-type: none"><li>• <a href="#">Galaxie Control Software</a> and help system</li><li>• Quaternary pump</li><li>• Autosampler with cooling</li><li>• UV-Vis dual wavelength detector</li><li>• Analytical flow cell (9x0)</li><li>• Column heater</li><li>• Tubing and connections</li><li>• Operation manual</li><li>• HPLC Reference Guide poster</li></ul>	001008920X  Where: X=0 for Australia/Asia X=1 for USA X=2 for Europe

### Galaxie data acquisition software: Section B

Select one item only from this section:

Description	Part Number
Galaxie data acquisition software, single Instrument Pkg	0395000096
Galaxie data acquisition software, four instrument Pkg	0395000094

### Instrument options: Section C

Select any of the options from the following section:

Description	Part Number
Refractive index detector (internal)	9710000600
PL-ELS 2100 evaporative light scattering detector (external)	08600110 (110V) 08600240 (240V)
PL-ELS 2100 ICE evaporative light scattering detector (external)	086001110 (110V) 086001240 (240V)
Fluorescence detector (internal)	9710000300
Valves for column heater	9810042300
Microanalytical flowcell (4x0)	0210224200
Refractive index detector (external)	PL08800000

### HPLC columns : Section D

Use the links below to select the HPLC columns that meet your specific application needs:

- [Pursuit®](#), [Pursuit® XRs](#), [Polaris®](#)

## 920-LC gradient analytical system with autosampler, diode array detection and column heater

To order a complete system select:

1	An instrument	Section A
2	Galaxie data acquisition software	Section B
3	Instrument options	Section C
4	HPLC columns	Section D
5	A PC and printer	<a href="#">PC Requirements</a>
6	Spares and Consumables	As required

### Instrument: Section A

Description	Part number
920-LC gradient analytical system with autosampler, diode array detection and column heater Includes: <ul style="list-style-type: none"> <li>• <a href="#">Galaxie Control Software</a> and help system</li> <li>• Quaternary pump</li> <li>• Autosampler</li> <li>• PDA single array detector</li> <li>• Analytical flow cell (9x0)</li> <li>• Column heater</li> <li>• Tubing and connections</li> <li>• Operation manual</li> <li>• HPLC Reference Guide poster</li> </ul>	001008930X  Where: X=0 for Australia/Asia X=1 for USA X=2 for Europe

### Galaxie data acquisition software : Section B

Select one item only from this section:

Description	Part Number
Galaxie data acquisition software, single Instrument Pkg	0395000096
Galaxie data acquisition software, four instrument Pkg	0395000094

### Instrument options: Section C

Select any of the options from the following section:

Description	Part Number
Refractive index detector (internal)	9710000600
PL-ELS 2100 evaporative light scattering detector (external)	08600110 (110V) 08600240 (240V)
PL-ELS 2100 ICE evaporative light scattering detector (external)	086001110 (110V) 086001240 (240V)
Fluorescence detector (internal)	9710000300
Valves for column heater	9810042300
Microanalytical flowcell (4x0)	0210224200
Refractive index detector (external)	PL08800000

### HPLC columns : Section D

Use the links below to select the HPLC columns that meet your specific application needs:

- [Pursuit®](#), [Pursuit® XRs](#), [Polaris®](#)

## 920-LC gradient analytical system with cooled autosampler, diode array detection and column heater

To order a complete system select:

1	An instrument	Section A
2	Galaxie data acquisition software	Section B
3	Instrument options	Section C
4	HPLC columns	Section D
5	A PC and printer	<a href="#">PC Requirements</a>
6	Spares and Consumables	As required

### Instrument: Section A

Description	Part number
920-LC gradient analytical system with cooled autosampler, diode array detection and column heater Includes: <ul style="list-style-type: none"> <li>• <a href="#">Galaxie Control Software</a> and help system</li> <li>• Quaternary pump</li> <li>• Autosampler with cooling</li> <li>• PDA single array detector</li> <li>• Analytical flow cell (9x0)</li> <li>• Column heater</li> <li>• Tubing and connections</li> <li>• Operation manual</li> <li>• HPLC Reference Guide poster</li> </ul>	001008940X  Where: X=0 for Australia/Asia X=1 for USA X=2 for Europe

### Galaxie data acquisition software : Section B

Select one item only from this section:

Description	Part Number
Galaxie data acquisition software, single Instrument Pkg	0395000096
Galaxie data acquisition software, four instrument Pkg	0395000094

### Instrument options: Section C

Select any of the options from the following section:

Description	Part Number
Refractive index detector (internal)	9710000600
PL-ELS 2100 evaporative light scattering detector (external)	08600110 (110V) 08600240 (240V)
PL-ELS 2100 ICE evaporative light scattering detector (external)	086001110 (110V) 086001240 (240V)
Fluorescence detector (internal)	9710000300
Valves for column heater	9810042300
Microanalytical flowcell (4x0)	0210224200
Refractive index detector (external)	PL08800000

### HPLC columns : Section D

Use the links below to select the HPLC columns that meet your specific application needs:

- [Pursuit®](#), [Pursuit® XRs](#), [Polaris®](#)

## 940-LC gradient semi-prep system with UV-Vis detection, manual injector and fraction collector

To order a complete system select:

1	An instrument	Section A
2	Galaxie data acquisition software	Section B
3	Instrument options	Section C
4	HPLC columns	Section D
5	A PC and printer	<a href="#">PC Requirements</a>
6	Spares and Consumables	As required

### Instrument: Section A

Description	Part number
940-LC gradient semi-prep system with UV-Vis detection, manual injector and fraction collector Includes: <ul style="list-style-type: none"><li>• <a href="#">Galaxie Control Software</a> and help system</li><li>• Binary gradient pump</li><li>• Manual injection valve</li><li>• UV dual wavelength detector</li><li>• Scale-up flow cell (4x0.25)</li><li>• 440-LC fraction collector</li><li>• Tubing and connections</li><li>• Operation manual</li><li>• HPLC Reference Guide poster</li></ul>	001008960X  Where: X=0 for Australia/Asia X=1 for USA X=2 for Europe

### Galaxie data acquisition software : Section B

Select one item only from this section:

Description	Part Number
Galaxie data acquisition software, single Instrument Pkg	0395000096
Galaxie data acquisition software, four instrument Pkg	0395000094

### Instrument options: Section C

Select any of the options from the following section:

Description	Part Number
445-LC Scale-up module	0210218900

### HPLC columns: Section D

Use the links below to select the HPLC columns and hardware that meet your specific application needs:

- [Pursuit®](#)
- [Pursuit® XRs](#)
- [Polaris®](#)

## 940-LC gradient semi-prep system with autosampler, UV-Vis detection, scale-up module and fraction collector

To order a complete system select:

1	An instrument	Section A
2	Galaxie data acquisition software	Section B
3	Instrument options	Section C
4	HPLC columns	Section D
5	A PC and printer	<a href="#">PC Requirements</a>
6	Spares and Consumables	As required

### Instrument: Section A

Description	Part number
940-LC gradient semi-prep system with autosampler, UV-Vis detection, scale-up module and fraction collector Includes: <ul style="list-style-type: none"> <li>• <a href="#">Galaxie Control Software</a> and help system</li> <li>• Binary gradient pump</li> <li>• Autosampler</li> <li>• UV dual wavelength detector</li> <li>• Scale-up flow cell (4x0.25)</li> <li>• 440-LC fraction collector</li> <li>• 445-LC scale-up module</li> <li>• Tubing and connections</li> <li>• Operation manual</li> <li>• HPLC Reference Guide poster</li> </ul>	001008970X  Where: X=0 for Australia/Asia X=1 for USA X=2 for Europe

### Galaxie data acquisition software: Section B

Select one item only from this section:

Description	Part Number
Galaxie data acquisition software, single Instrument Pkg	0395000096
Galaxie data acquisition software, four instrument Pkg	0395000094

### Instrument options: Section C

Select any of the options from the following section:

Description	Part Number
Manual Injector - Prep	9710000200

### HPLC columns: Section D

Use the links below to select the HPLC columns and hardware that meet your specific application needs:

- [Pursuit®](#)
- [Pursuit® XRs](#)
- [Polaris®](#)

## 940-LC gradient semi-prep system with autosampler, diode array detection, scale-up module and fraction collector

To order a complete system select:

1	An instrument	Section A
2	Galaxie data acquisition software	Section B
3	Instrument options	Section C
4	HPLC columns	Section D
5	A PC and printer	<a href="#">PC Requirements</a>
6	Spares and Consumables	As required

### Instrument: Section A

Description	Part number
940-LC gradient semi-prep system with autosampler, diode array detection, scale-up module and fraction collector Includes: <ul style="list-style-type: none"> <li>• <a href="#">Galaxie Control Software</a> and help system</li> <li>• Binary gradient pump</li> <li>• Autosampler</li> <li>• PDA dual array detector</li> <li>• Scale-up flow cell (4x0.25)</li> <li>• 440-LC fraction collector</li> <li>• 445-LC scale-up module</li> <li>• Tubing and connections</li> <li>• Operation manual</li> <li>• HPLC Reference Guide poster</li> </ul>	001008980X  Where: X=0 for Australia/Asia X=1 for USA X=2 for Europe

### Galaxie data acquisition software : Section B

Select one item only from this section:

Description	Part Number
Galaxie data acquisition software, single Instrument Pkg	0395000096
Galaxie data acquisition software, four instrument Pkg	0395000094

### Instrument options: Section C

Select any of the options from the following section:

Description	Part Number
Manual Injector - Prep	9710000200

### HPLC columns: Section D

Use the links below to select the HPLC columns and hardware that meet your specific application needs:

- [Pursuit®](#)
- [Pursuit® XRs](#)
- [Polaris®](#)

## 940-LC gradient prep system with pump injector and UV detection

To order a complete system select:

1	An instrument	Section A
2	Galaxie data acquisition software	Section B
3	Instrument options	Section C
4	HPLC columns	Section D
5	A PC and printer	<a href="#">PC Requirements</a>
6	Spares and Consumables	As required

### Instrument: Section A

Description	Part number
940-LC gradient semi-prep system with autosampler, diode array detection, scale-up module and fraction collector Includes: <ul style="list-style-type: none"><li>• <b>Galaxie Control Software</b> and help system</li><li>• Binary gradient pump</li><li>• Thru pump injector</li><li>• UV dual wavelength detector</li><li>• Super Prep flow cell (4x0.15)</li><li>• Tubing and connections</li><li>• Operation manual</li><li>• HPLC Reference Guide poster</li></ul>	001008990X  Where: X=0 for Australia/Asia X=1 for USA X=2 for Europe

### Galaxie data acquisition software: Section B

Select one item only from this section:

Description	Part Number
Galaxie data acquisition software, single Instrument Pkg	0395000096
Galaxie data acquisition software, four instrument Pkg	0395000094

### Instrument options: Section C

Select any of the options from the following section:

Description	Part Number
Manual Injector - Prep	9710000200
400-LC fraction collector	0010088900
Preparative flowcell (9x1)	0210181900

### HPLC columns: Section D

Use the links below to select the HPLC columns and hardware that meet your specific application needs:

- [Pursuit®](#)
- [Pursuit® XRs](#)
- [Polaris®](#)